



HORIZON*

Horizontal Multi-Phase Production Logging

EUPS – The KOC Business Partner of Choice for H-PLT

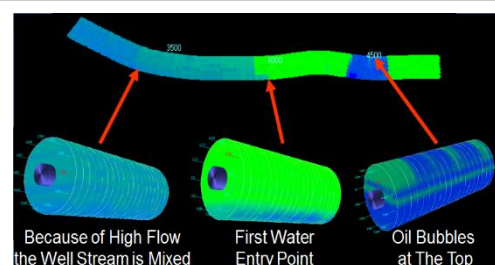
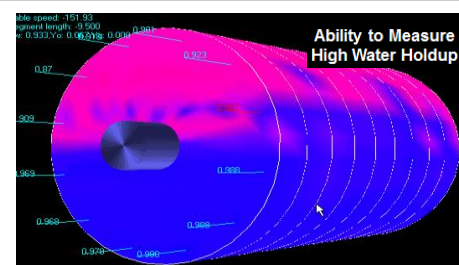
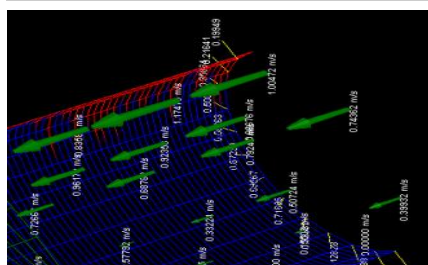
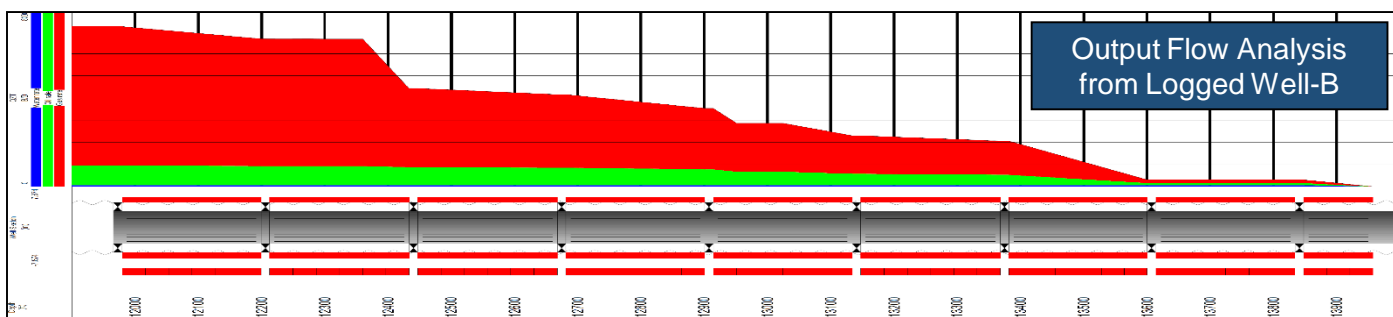
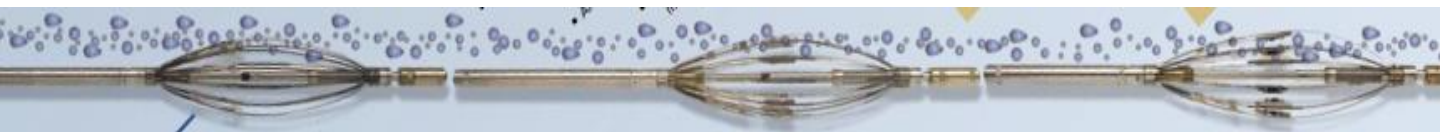
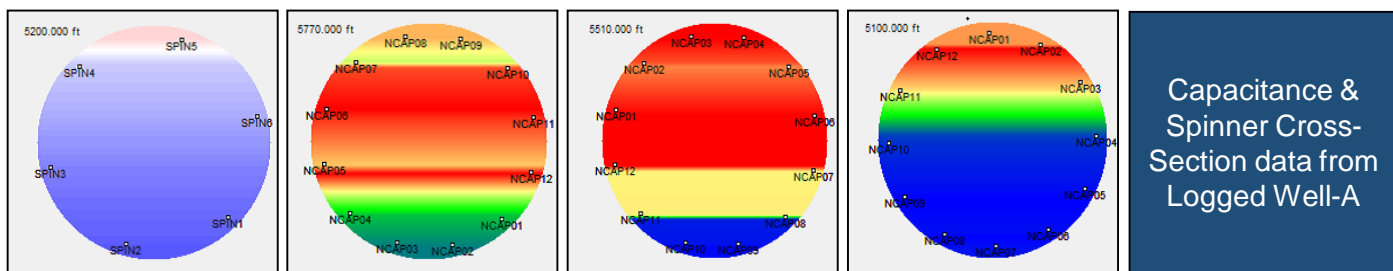
Successfully Completes a Record Breaking HORIZON* Campaign of 14 Horizontal Wells in Record Time, with Immaculate HSE & SQ Delivery, Outperforming International Services Providers & at Substantial Cost Savings to KOC

(*) Mark of EUPS.

SUCCESS STORY



As well inclination increases approaching near horizontal conditions, different produced phases segregate in the wellbore cross-section and tend to have different phase velocities. In such conditions, flow measurements centrally in the well-bore becomes invalid as well as any attempt of fluid differentiation based on gradio/density. By having circumferential multiple spinners around the wellbore along with aligned capacitance and resistivity sensors, **HORIZON*** identifies the different phase velocities and fluid holdups in the wellbore cross-section, thus quantifying the flow-rate (Q) of each produced phase separately.



TRAC-THOR*

EUPS Introduced **TRAC-THOR*** technology as its latest conveyance method in challenging horizontal wellbore conditions. In addition to its exceptional tracting abilities, **TRAC-THOR*** is featured with Logging While Tracting (LWT) capability as well as providing real-time log of CCL, Head Tension, Tractor Speed and Position. **TRAC-THOR*** is DC powered and drives both uphole and downhole. **TRAC-THOR*** has proven highly reliable with KOC operations in challenging hole conditions with variable IDs (e.g. ICD Completions) in addition to being exceptionally faster and more efficient than CT conveyance, thus resulting in extensive time savings to KOC.

(*) Mark of EUPS.

