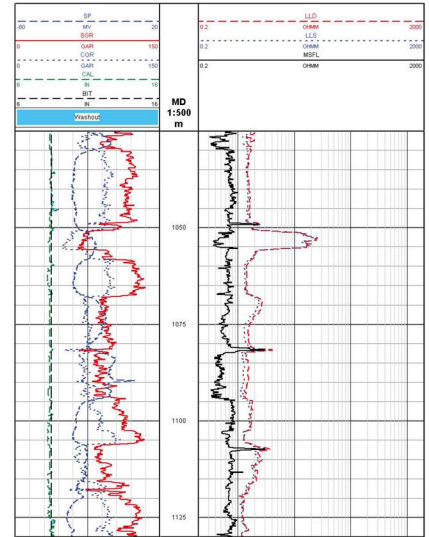
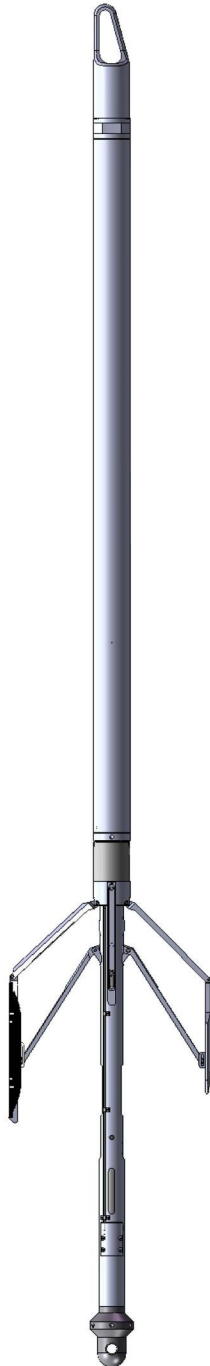


Micro Spherical Focused Laterolog Tool (MSF)

MSF is a kind of current focus micro resistivity well logging tool. It has a special structure and special electrodes. Therefore, the detected flushed zone resistivity is less affected by the mud cake, and closer to the real flushed zone resistivity. MSF also has caliper measurement.



Specifications

Maximum Temperature	400°F(200°C) for 3 hours
Maximum Pressure	20,000 psi (137.9 MPa) (1406 kg/cm ²)
Tool Diameter	92mm
Minimum Closed Diameter	no more than 120mm
Maximum Open Diameter	500mm
Length	3.201m
Weight	90kg
Maximum Logging Speed	1000m/h
Rx0 Measuring Range	0.2~2000 Ω·m
Rx0 Measuring Accuracy:	0.2 Ω·m~2 Ω·m/±1% 2 Ω·m~200 Ω·m/±5% 200 Ω·m~1000 Ω·m/±10% or 5mS/m
Caliper Range	150mm~420mm
Caliper Accuracy	±5%
Depth of Investigation	100mm~150mm
Repeatability	±10%
Vertical Resolution	200 mm
Wireline Requirement	7 conductor cable
Operating Voltage	180 Vac/50Hz
Detector or Sensor Type	Pad